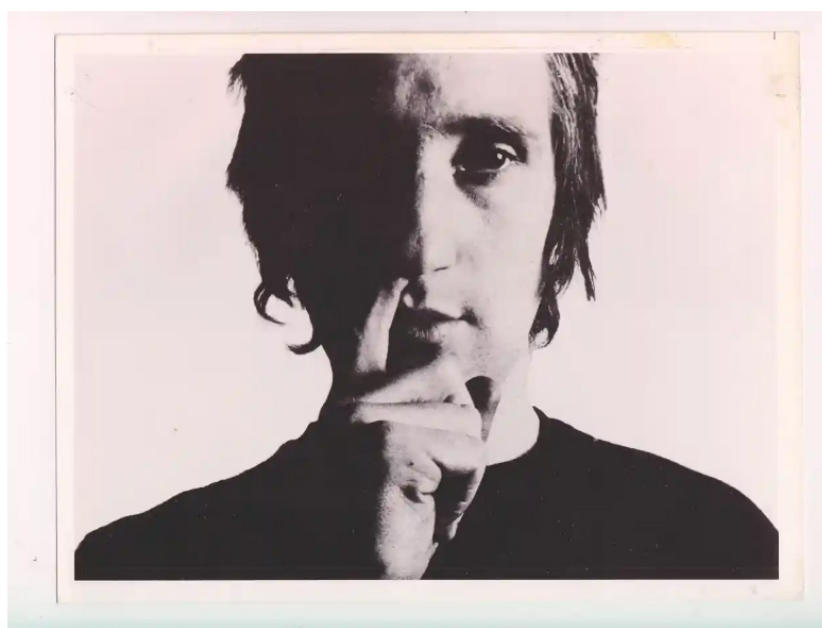


Tanya Leighton

## Dennis Hopper, Bruce McLean, Celia Paul: the week's art shows in pictures

**From Dennis Hopper's Lost Album of 1960s photos in London to a retrospective of Bruce McLean's work in Colchester, Skye Sherwin and Robert Clark find out what's happening in art around the country**

**Bruce McLean, Colchester**



📷 Photograph: Dirk Buwalda Photograph: Dirk Buwalda/Other

Bruce McLean is one of the British art establishment's irrepressible satirists. In the 1960s he rebelled against his teachers, sculptors Anthony Caro and Phillip King, preferring to work with more ephemeral fare - nature, his body - with an impish humour. In one photographic series, he lounged on plinths, aping Henry Moore's sculpture. In 1972, when Tate offered him a show he staged a one-day-long retrospective. This survey, however, runs the gamut of his career, from the cheeky early works to later punky expressionist paintings and ceramics. Photos document fleeting sculptures, from a "shorescape" structure on an empty beach to "floataways", bobbing dots of colour on a pond. But with its scribbled ribbons of painted steel, the 5.5-metre Ludgate Head was built to last.

***Firstsite, to 21 Sep***

RC

The Guardian, June 2014

Kurfürstenstraße 156, 10785 Berlin  
+49 (0)30 21 972 220, [info@tanyaleighton.com](mailto:info@tanyaleighton.com), [www.tanyaleighton.com](http://www.tanyaleighton.com)